

2024 Community Benefit Report



UCSF Benioff Children's Hospital
Oakland

TABLE OF CONTENTS

Letter from the President	3
UCSF Benioff Children's Hospital Oakland	4
By The Numbers	5
Community Benefit Overview	6
Community Benefit Impact	7
Community Health Needs Assessment Priority Areas	8
Uncompensated and Charity Care	9
Community Health Initiatives	10
Structural Racism	11
Behavioral Health	13
Access to Care	15
Community Safety	18
Economic Security	20

Letter from the President



Dear Community Members,

We are excited to share the 2024 Community Benefit Report for UCSF Benioff Children's Hospital (BCH) Oakland. This year's report highlights our steadfast dedication to improving the health and well-being of children and families across Alameda County and Oakland. Grounded in our mission, we continue to focus on programs, partnerships, and initiatives that address health disparities, advance equity, and expand access to care for all.

Oakland is not just where we work—it's a vital part of who we are. This year, we've deepened our engagement with the community, channeling resources and expertise into initiatives designed to meet local needs. Some key highlights from 2024 include:

- **Equitable Access to Care:** We are committed to expanding access to pediatric healthcare services to ensure that all families across Oakland receive the care they need, regardless of socioeconomic status. Our planned mobile clinic, expected to launch in the summer of 2025, will address critical gaps in care for underserved communities. Additionally, our growing telehealth services continue to provide families with essential healthcare support, breaking down barriers to access and improving health equity across the region.
- **Community Health Partnerships:** Through partnerships with local organizations, we are committed to addressing the social drivers of health, including food security, housing instability, and mental health support.
- **Focus on Equity:** BCH Oakland drives health equity by increasing BIPOC representation, expanding youth healthcare pathways, and improving inclusive access to care. From workforce diversity initiatives to digital health equity efforts, BCH's strategic priorities focus on breaking barriers, addressing bias, and fostering safety and belonging for all.
- **Youth Empowerment Programs:** We've invested in youth development by supporting after-school programs, mentorship opportunities, and community-building activities that empower Oakland's next generation of leaders.
- **Sustainability and Growth:** As part of our ongoing commitment to Oakland, we've taken steps toward modernizing our facilities and expanding services to ensure that families continue to have access to high-quality, state-of-the-art medical care. This growth reflects our dedication to remaining a trusted, long-term partner in advancing the health and well-being of this community.

None of this would be possible without the collective efforts of our dedicated team, community partners, and the resilient families we serve. Together, we are driving meaningful progress toward a future where every child, both within Alameda County and beyond, has the opportunity to lead a healthy, thriving, and fulfilling life—no matter where they call home.

We invite you to explore this year's report to learn more about how BCH Oakland is making an impact in our community. Thank you for your continued trust and partnership as we work toward health equity and excellence in pediatric care.

With gratitude,

Nicholas Holmes, MD, MBA
President, UCSF Benioff Children's Hospitals

UCSF BCH Oakland



VISION

To be the best provider of health care services, the best place to work, and the best environment for teaching and research.

MISSION

Through Caring, Healing, Teaching and Discovering, we strive to provide the highest-quality health care to all children in our communities, regardless of any identified status, including race, religion or financial status.

SERVICE AREA AND SCOPE OF SERVICES

UCSF Benioff Children's Hospital Oakland is a leading healthcare provider offering a wide range of inpatient and outpatient services, serving patients from Alameda County and beyond. It features the largest pediatric primary care clinic in the Bay Area, along with two school-based clinics and a clinic at the Juvenile Justice Center in San Leandro.

GOVERNANCE

UCSF Benioff Children's Hospital Oakland is a private, nonprofit 501(c)(3) organization that affiliated with Children's Hospital Oakland in 2014, combining two esteemed healthcare entities focused on pediatric care with over a century of experience.

By the Numbers

Every day, we are fueled by our shared mission of Caring, Healing, Teaching, and Discovering to uplift the health and wellness of children.

CARING



293K

Outpatient Visits
including FQHC visits

4

Federally-Qualified Health Center Sites

7.4K

Inpatient Visits

530+

Nurses

1K+

Physicians



958

Medical Students Residents and Fellows



EQUITY



Overcoming barriers to care and social vulnerabilities

through our Novel Interventions in Children's Healthcare (NICH) Program



Increasing access to mental health care services

through the UCSF Child & Adolescent Psychiatry Portal (CAPP)

QUALITY



Ranked among the nation's best

in all 11 specialties



Level 1 pediatric trauma center

UCSF Benioff Children's Hospital Oakland is Northern California's highest volume ACS-verified Level 1 pediatric trauma center

Community Benefit Overview

The Affordable Care Act (ACA) mandates that non-profit hospitals assess and report their contributions to community health through an annual Community Benefit Report. This requirement is designed to highlight hospital efforts beyond core clinical functions, documenting how institutions address identified community health needs.

At UCSF Benioff Children's Hospital Oakland (BCH Oakland), we are proud to operate one of the most robust community benefits programs among children's hospitals in California. Our annual Community Benefit Report highlights initiatives and activities carried out in the reported fiscal year that aim to improve the health and well-being of the communities we serve.

While California's SB 697 offers some general guidelines on community benefit, the term remains loosely defined at the state level. To ensure clarity and alignment, BCH Oakland adopts the following working definition of "community benefit" below, which guides our efforts and reporting processes. This commitment underscores BCH Oakland's dedication to addressing systemic inequities, advancing health equity, and meeting the diverse needs of our community.

COMMUNITY BENEFIT CRITERIA

A community benefit is a planned, managed, organized, and measured approach to meet documentable community needs intended to improve access to care, health status, and quality of life. A community benefit should meet one or more of these criteria:

- Responds to public health needs or the needs of a vulnerable or at-risk population
- Generates no (or negative) profit margin
- Would likely be discontinued if the decision were made on a purely financial basis
- Is not considered standard of care for a children's hospital.

More information can be found [here](#).

REPORT PREPARATION

Oversight for this report was provided in collaboration with BCH Oakland leadership, program leads, UCSF Health Accounting and Finance teams, and BCH Oakland's Anchor Institution Mission lead. The 2024 report is publicly accessible to both hospital staff and the broader community through the hospital's website. To ensure public awareness of its community benefit program, BCH Oakland leverages multiple communication channels, including its website, social media platforms, traditional media, and other publications.



Community Benefit Impact

UCSF Benioff Children's Hospital Oakland's methodology for determining the economic value of the benefit to the community incorporates reporting requirements for the IRS and the California Hospital Association's community benefit valuation standards. The community benefit valuation is the total net cost of charity care, undercompensated government-sponsored medical care, professional education, and subsidized community programs, services, and research above and beyond reimbursement, philanthropic support, grants, and supplemental funding.

ECONOMIC VALUE	FY 2024
Charity Care Free care to uninsured and underinsured people	\$ 2,228,168
Government-Sponsored Health Care Unpaid cost of public coverage programs, net of all government funding	\$ 299,175,481
Health Professions Education Graduate medical education, Fellows, Nurses	\$ 14,161,795
Subsidized Health Programs Clinical services provided despite a financial loss to the organization	\$ 4,328,826
Community Health Services Activities or programs, subsidized by the hospital, carried out and supported for the express purpose of improving community health	\$ 22,246,294
Research (includes research costs not covered by external sponsors)	\$ 2,156,013
Advocacy for Children's Health Issues	<i>Included in operations</i>
Subtotal	\$ 344,296,576
Supplemental Revenue Less DSH/Supplemental Funding (SB855/SB1255), including Measure A Less Net Hospital Provider Fee	\$ 128,442,247 \$ 127,153,613
Total Charity Care and Community Benefit	\$ 88,700,715

Note: The reduction in total charity and community benefit number in 2024 compared with 2023 is due to a 2-year recognition of Medi-Cal supplemental revenue in FY24. The HCAI filing date of 1/26/2025 is before the finalization of the FY2024 IRS filing, and the University of California Office of the President's (UCOP) Community Benefit FY24 reports. The amounts noted for the HCAI report may change to the extent the IRS filing and/or the UCOP reports require changes.

Undercompensated and Charity Care

GOVERNMENT-SPONSORED HEALTH CARE

Children's hospitals across the country face a persistent financial gap, where the cost of delivering high-quality care often exceeds the reimbursement rates provided by government-sponsored health insurance programs like Medicaid. At UCSF Benioff Children's Hospital Oakland, over 75% of patient visits in 2024 were covered by these government-funded insurance programs. Despite these financial pressures, the hospital remains unwavering in its commitment to bridge the gap and ensure every child receives the care they need, regardless of coverage limitations.

CHARITY CARE

We are deeply committed to ensuring that all children in our community receive the care they need, regardless of their financial situation or insurance coverage. For families who don't qualify for government-funded health insurance and meet specific income criteria, we offer financial assistance through our charity care program. To apply, patients must complete an application and provide documentation to verify their household income. We actively work to inform uninsured and self-pay families about this program by distributing brochures in our Emergency Department and including notices about financial assistance options on billing statements. Our goal is to make these resources more accessible and reduce the financial barriers to care.



Community Health Initiatives



ADDRESSING COMMUNITY HEALTH NEEDS

BCH Oakland remains steadfast in its commitment to advancing strategies that directly address the health needs prioritized by our community. **The initiatives highlighted in this report build upon those featured in previous reports and align with the 2022-2024 CHNA Implementation Plan priorities.**

While this report showcases a selection of impactful programs designed to meet community needs, it does not encompass the full scope of our ongoing efforts. Instead, it spotlights key areas where we are making meaningful progress.

For the 2024 report, we continue to apply a multidisciplinary approach to better capture the interconnected nature of the priorities identified in the 2022 CHNA, ensuring a more holistic and comprehensive response.

We recognize structural racism as a fundamental driver of health disparities and have adopted an integrated framework to address its impact. Social determinants of health—including housing, food security, transportation, and income/employment—are now consolidated under the broader priority of "economic security" to more effectively target systemic barriers to health equity. This approach underscores our commitment to addressing root causes of inequities and fostering sustainable, long-term improvements in community health.

1

Behavioral Health

In 2024, behavioral health challenges remain critical across Alameda County, with anxiety, depression, and suicidal ideation particularly impacting Black/African American, Latinx, and LGBTQIA+ youth. The 2022 Community Health Needs Assessment highlights ongoing gaps in care, especially in Northern Alameda County, where intergenerational trauma, stigma, and language barriers persist. Prolonged social isolation and economic pressures continue to exacerbate mental health struggles, particularly among adolescents.

BCH Oakland remains a leader in addressing behavioral health needs. Our 75 full-time behavioral health staff handle approximately 28,000 visits annually, delivering evidence-based, trauma-informed care. Through partnerships with schools and community organizations, we provide accessible, culturally concordant mental health services to vulnerable populations. BCH Oakland is committed to breaking cycles of trauma, reducing stigma, and fostering long-term community resilience.

INITIATIVES

Preventing Suicide Initiative

The Preventing Youth Suicide Initiative is a commitment to improving the care we provide to our patients who are struggling with suicide. The Preventing Youth Suicide Initiative, launched as a quality improvement and patient care initiative, focuses on addressing the critical issue of youth suicide within our two pediatric emergency care departments. This program is designed to enhance the identification, evaluation, and support of at-risk youth through evidence-based screening protocols, staff training, and timely access to mental health resources. By fostering a proactive and compassionate approach, the initiative aims to improve outcomes, reduce stigma, and create a safer environment for young patients during their most vulnerable moments.

Youth suicide prevention is a vital public health priority, particularly as rates of suicide among Black youth have been rising at alarming rates. By addressing systemic inequities, reducing stigma, and increasing access to culturally responsive mental health resources, we can create pathways for early intervention and support. Focusing on this vulnerable population is essential to ensuring that every young person has the opportunity to thrive and achieve their full potential.

2024 Stats

11,122

Patients screened for suicide

286

Patients screened at imminent risk

600

Patients screened at moderate risk

100%

Screening rate for June and July 2024

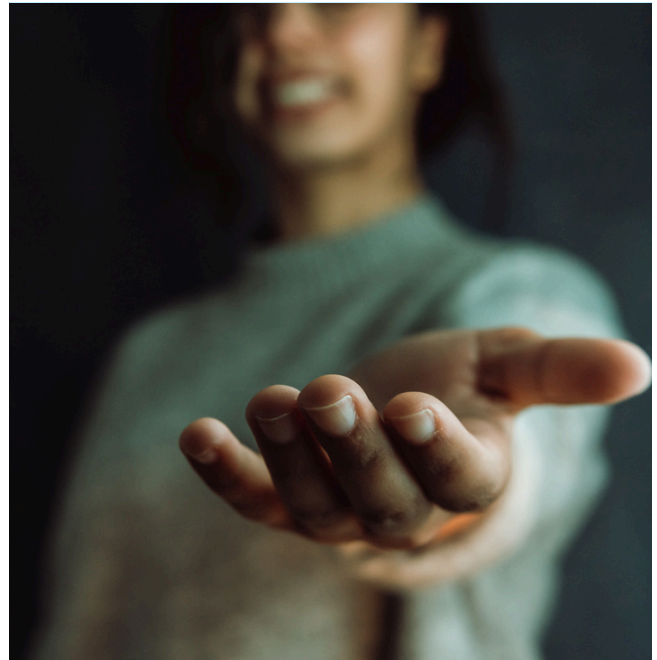
1

Behavioral Health

Behavioral Health Outpatient Crisis Response and Bridge Clinic (CRBC)

In response to the increasing demand for immediate, high-quality mental health care and the need to support individuals in crisis effectively, we piloted a Behavioral Health Outpatient Crisis Response and Bridge Clinic (CRBC). This team provides rapid, coordinated, and compassionate care to individuals experiencing behavioral health crises, ensuring timely intervention, reducing hospital admissions, and enhancing community well-being. The objectives of the CRBC are to:

- **Provide Immediate Support:** Offer swift and effective intervention for individuals in behavioral health crises, reducing the need for emergency room visits and hospital admissions.
- **Enhance Community Mental Health:** Support community mental health by delivering crisis intervention and follow-up care in an outpatient setting. This includes individual and family therapy, in office and in the community (in home, at school etc.), individualized education program (IEP) support and consultation. Immediate access to psychiatry with medication evaluation and management.
- **Promote Recovery and Stability:** Facilitate stabilization and recovery through tailored treatment plans and community-based support services.
- **Reduce System Strain:** Alleviate pressure on emergency departments and inpatient facilities by addressing crises in an outpatient setting.



1 Behavioral Health

Center for Child Protection

The Center for Child Protection at UCSF Benioff Children's Hospital Oakland is the medical sub-specialty provider for forensic medical and mental health services for Alameda County's child abuse survivors. Traditional trauma treatment and the Child and Family Traumatic Stress Intervention model are now available to all Alameda County children and youth. CFTSI fills a gap between acute responses/crisis intervention and longer-term treatments designed to address traumatic stress symptoms and disorders. The goal of this family-strengthening model is to improve the caregiver's ability to respond to and support children who have reported post-traumatic symptoms. By raising awareness of the child's symptoms, increasing communication, and providing skills to help master trauma reactions, CFTSI aims to reduce symptoms and prevent the onset of post-traumatic stress disorder (PTSD). It also offers an opportunity to assess which children and families need longer-term treatment.



2024 Stats

93

Crisis Response and Bridge Clinic (CRBC) Unique Patients

511

CRBC Short-Term Therapy Sessions

1,249

Center for Child Protection Consults

0-21

Ages Served

Access to Care

In 2024, UCSF Benioff Children's Hospital Oakland supports four federally qualified health centers (FQHCs) collectively serving over 9,000 children including teens and young adults who often face challenges related to poverty, community violence, unstable housing, and limited access to healthy food. This network includes the Teen Clinic, the Chappell-Hayes Health Center, and the Youth Uprising/Castlemont Health Center, each providing integrated primary and behavioral health services. By working closely with local educational and public health partners, our clinics illustrate a comprehensive approach to adolescent healthcare that recognizes the social factors shaping overall health outcomes and promotes more equitable, long-term well-being for the youth we serve.

INITIATIVES

Mobile Health Clinic

BCH Oakland is expanding its primary health care infrastructure with the launch of a mobile medical and mental health unit in Summer 2025. The unit will feature two exam rooms and lab facilities, providing essential primary care and mental health services to unhoused individuals, families with unstable housing, and underserved communities. In partnership with its FQHCs, the mobile unit will operate at homeless shelters, schools, and neighborhoods to improve health access for BCH Oakland's patient population and those in need.

Adolescent Digital Health Screener

Developed in partnership with BCH Oakland's Youth Wellness Advisory Board, this digital screener reflects patient-centered feedback and enhances accessibility via QR codes for mobile devices or iPads. By prioritizing confidentiality and ease of use, the tool improves response rates, allowing providers to gather critical insights that support more personalized care and better health outcomes for youth patients.

MyChart

In 2024, we will continue to collaborate with key stakeholders to increase MyChart enrollment and accessibility, enhance self-scheduling functionality, and drive equitable enrollment across all races, ethnicities, and language groups. These efforts aim to ensure that all patients have timely access to care and can easily engage with their health information. At the end of fiscal year 2024, 63% of our Federally Qualified Health Center (FQHC) patients were actively utilizing MyChart, up from 56% at the start of the year. Year-to-date, this figure has risen to 69%, reflecting meaningful progress in patient engagement. Additionally, the FQHC has reduced disparities in MyChart usage among African American and Latinx patients by an average of 3%, reinforcing our commitment to advancing health equity through digital tools.



2

Access to Care

Black Love Opportunity and Outcome Improvement in Medicine (BLOOM)

BLOOM is a part of the Center for Child and Community Health (CCCH) and are partners in addressing health inequity in the Black community here in the Bay Area. FINDconnect, another program under CCCH, works with BLOOM patients for resource linkage and referrals.

The mission of the BLOOM clinic is to transform the standard of care for high-quality care that is timely, equitable, patient-centered, safe, and effective for Black children in Oakland, California.



Two key objectives of the BLOOM clinic are: (1) To dismantle structural racism in pediatric primary care settings in order to deliver better quality care to Black children early in their development; and (2) To address existing care gaps for Black children through holistic services delivered by racially concordant providers.

Families with children from birth to age three have access to a range of services in one safe, supportive, and convenient location. Black pediatricians, health educators, therapists, navigators, family support specialists, and breastfeeding coaches work together to understand and address the needs and priorities of each patient and family.

BLOOM takes the time to get to know families, answer questions, and provide care that aligns with proven practices that are rigorously assessed the effectiveness.

BLOOM clinic is part of the FQHC. BLOOM provides training and education opportunities for students and trainees and across every facet of our work, from provider training to research to care design and implementation, we partner with families.

In addition to exception primary care, services offered include: lactation education and nutrition consultation, mental health services and wellness, group visits for breastfeeding and resiliency, resource and referrals by community health workers, annual reunions, and provider wellness.

2024 Stats

651

Total number of
Clinic Visits

163

Familied served

179

Unique individual
patients

90%

Average show rate

98%

Patients expressing
extreme satisfaction

Access to Care

LGBTQ+ Drop-In Centers

The Children and Youth Behavioral Health Initiative (CYBHI) grant funds youth-led and designed LGBTQI+ drop-in centers at both of our school-based health centers, providing safe, inclusive spaces where LGBTQ+ youth can access vital resources, connection, and support.

At Youth Uprising/Castlemont, the drop-in center, called *United in Colors*, serves as a vibrant, welcoming hub. It is guided by the Youth Wellness Advisory Board, a Youth Design Advisory Board, and Peer Wellness Interns—students trained to offer mental health support.

At Chappell-Hayes/McClymonds, a second drop-in center is currently in development, led by the Youth Design Advisory Board. While the center has not yet been named, its planning is well underway. This site is also supported by a Youth Wellness Advisory Board and Peer Wellness Interns.



Our school-based health centers prioritize youth voice and leadership through key programs:

- **Youth Wellness Advisory Board:** Guides health and wellness initiatives.
- **Youth Design Advisory Board:** Shapes the creation of LGBTQI+ drop-in centers.
- **Peer Wellness Interns:** Provide peer-led mental health support and outreach.

At Castlemont, we've expanded access by offering the Youth Wellness Advisory Board in both English and Spanish to engage recent immigrant youth. Across both sites, these youth-led efforts foster safe spaces that celebrate queer joy, promote mental health, and empower student leaders.

2024 Stats

5-7

Average Weekly Visitors
(United in Colors)

7

Youth Design Advisory Board Members
(Both Locations)

4

Total Peer Wellness Interns
(Both Locations)

18

Number of Partner Events Hosted
(Both Locations)

134

Total Event Attendees
(Q2, McClymonds)

Our Community Partners

Castlemont High School, McClymonds High School, Oakland Unified School District, Destiny Arts, Umoja Health

3

Community Safety

INITIATIVES

Childhood Injury Prevention Program

The Childhood Injury Prevention Program (CIPP), under Trauma Services, aims to reduce accidental child injuries and fatalities through safety equipment, education, and advocacy. Key concerns from Alameda County and BCH Oakland Needs Assessments include community and family safety, prompting ongoing initiatives like distributing free bike helmets, cribs, locks, and car seats, with a focus on correcting car seat misuse, affecting over 85% of families.

In response to the growing risk of firearm injuries, the program launched a free gun lock distribution to prevent accidental discharges. Additionally, the team offers Stop the Bleed™ trainings, empowering community members to manage life-threatening bleeding. The program thrives through partnerships with the Cal-Nev-Ha Children's Fund and Kiwanis Clubs, expanding efforts like teacher training at local schools to enhance community safety education.

Priority Initiatives:

- **Child Passenger Safety:** Engages families in car seat check-up events held monthly on campus and various community events in collaboration with partners. This past year 496 car seats were distributed.
- **Stop the Bleed:** Using the American College of Surgeon Stop the Bleed Campaign have trained 170 students, childcare providers, community members and hospital staff.
- **Safe Sleep:** NEW Cribs for Kids Partnership: In response to rising rates of sudden unexpected infant deaths, particularly among African American communities, the program partners with Cribs for Kids to provide safe sleep resources, including cribs and halo sleep sacks, to at-risk families. The initiative works in close collaboration with the Neonatal Intensive Care Unit (NICU) and the BLOOM clinic to provide essential resources for vulnerable populations. 41 distributed in FY 2024.
- **Project Child Safe:** Gun Lock Distribution: A new initiative to prevent child injury from accidental firearm discharge by distribution of gun locks to anyone who wants one, no questions asked. 45 distributed in FY 2024.

These efforts, alongside the distribution of cribs and car seats, aim to prevent injury and promote safety for children in the community.

2024 Stats

Our CIPP Partners

Cal-Nev-Ha Children's Fund, Kiwanis Int'l, YMCA of the East Bay, Mujeres Unidas y Activas, Cribs for Kids, NICU, BLOOM Clinic, and more

496

Number of car seats distributed

Our YVIP Partners

Youth ALIVE!, RYSE Youth Center, Beyond Violence, CURYJ, and Native American Health Center

57

Community Violence Referrals to Youth ALIVE! (196% increase from FY23)

4

Priority Initiatives

3

Community Safety

Youth Violence Intervention Program

Childhood Injury Prevention also includes the Youth Violence Intervention Program (YVIP) in partnership with Youth ALIVE!, Trauma Services, and BCH Oakland Social Services.

The YVIP program supports youth who are victims of violence, seen at our hospital (either in the Emergency Department or as admitted patients). Addressing violence as a critical community safety concern, the program provides immediate bedside assistance to engage victims of violence and facilitate community based-organizations and resources available to those caught in the crossfire.



4

Economic Security

INITIATIVES

Food Security

Steady employment leads to better health outcomes and reduced poverty. However, many families in Alameda County struggle to secure living-wage jobs due to high living costs. Black/African American and Latinx residents in Oakland face particularly stark income and employment disparities. Addressing social determinants of health — including income, employment, housing, food security, and transportation — is critical to improving health outcomes for these communities. Food insecurity is a growing public health crisis. According to Feeding America, 1 in 9 children face hunger, which can have lasting effects on their health and well-being. In response, UCSF Benioff Children's Hospital Oakland Center for Child and Community Health partners with the Alameda County Community Food Bank and Deep Medicine Circle to help address this need. One key initiative is the Rooftop Farm atop the Logan Apartments on 51st and Telegraph Streets in Oakland — one of the largest rooftop farms on the West Coast. Managed by Deep Medicine Circle, the farm provides a unique learning experience for pediatric residents, who assist with year-round harvesting. The produce is distributed to families served by our primary care clinic, ensuring access to fresh, organic fruits and vegetables while addressing food insecurity at its root.

Strategies for Food as Medicine

The Center for Child and Community Health addresses food insecurity through a multifaceted approach aimed at meeting the urgent needs of our community:

- **Routine Screening:** screen all pediatric patients at the Federally Qualified Primary Care Clinic for food insecurity through the Family Information Navigation Desk (FIND)
- **Partnership with Alameda County Community Food Bank:** families are referred to the Food Bank to ensure access to both emergency food and longer-term support
- **Rooftop Farm Collaborative:** In partnership with Deep Medicine Circle, our rooftop Farm provides organic produce to families in need with over 2,500 lbs of organic produce distributed in FY 2024.
- **Food Farmacies:** A cornerstone of our efforts, the Food Farmacy events have historically received unwavering support from the Food Bank. The food bank is the primary source of both dry goods and fresh produce distributed to families at both our Main Hospital and Primary Care Clinic. Remarkably, this year alone, we have impacted 3,381 households, distributing an impressive 136,121 lbs. of food, as evidenced by data from the Alameda County Food Bank.



Economic Security

Family Information & Navigation Desk (FIND)

FIND strives to understand the root causes of health inequities and take a preventive approach to protecting the health of our families. The FIND program also has its own digital platform that allows navigators to screen for basic needs – such as nutritious food, housing, and utilities and connect families to community resources when necessary. FIND collaborates with many community organizations, including:

- Alameda County Food Bank
- Oakland Promise - Brilliant Baby
- Bananas
- CoachArt
- Family Resource Navigators
- Through the Looking Glass
- Brighter Beginnings
- YMCA



Program Updates:

- As of April 2024, BCH Oakland has expanded patient support services with a third full-time Primary Care Navigator. Navigators now support three key areas: the BLOOM Clinic, the International and Asylum Clinic, and the Pediatric Supporting Parents' Group.
- Resident Providers in Primary Care and Patient Navigators in the Emergency and Outpatient Centers have completed training to provide compassionate, culturally responsive care.
- Medical Social Workers conduct psychosocial assessments, while Encore Clinic Case Managers evaluate housing stability and connect families facing housing insecurity to resources. Additionally, a Family Partner in Primary Care supports early childhood programs, empowering parents and caregivers.
- These efforts reflect BCH Oakland's commitment to addressing social determinants of health and delivering equitable, patient-centered care.

For more information on FINDconnect: <https://findconnect.org/>

FIND community resources portal: <https://access.community/>

2024 Stats

574

Number of families enrolled in FY24

2,749+

Community Referrals Made

Top priorities identified by families

Activities 39%
Food 26%
Housing 24%

Utilities 16%
Legal 14%

Economic Security

Dr. Barbara Staggers Community Health & Adolescent Program for Success (CHAMPS)

CHAMPS offers comprehensive programming to underrepresented youth interested in careers in the health field. The program supports local high school students with a combination of clinical internships, educational interventions, life coaching, leadership activities, which equips them with the interpersonal skills and confidence necessary for success. CHAMPS partners with local high schools, health academies, universities, medical schools, and residency programs as part of a health professions pipeline. The ultimate goal of CHAMPS is to increase diversity among the healthcare workforce and reducing health disparities in disenfranchised communities.



Youth Participant's Race/Ethnicity	% served
Asian	16.88%
Black or African American	16.88%
Hispanic or Latino	55.84%
Middle East/North Africa	3.9%
Two or More Races	5.2%

2024 Stats

77

Number of students/interns

13

Class of 2024 Graduates

30+

Number of departments or specialties involved in hosting interns for rotations

Our partners

Ethnic Health Institute (Samuel Merritt University), PRIME-US UCSF School of Medicine, Alameda County Health Pathway Partnership, Mentoring in Medicine & Science, UCSF Summer Student Research Program (SSRP), Bank of America

455

Total Mentoring Hours Provided
(over a 2.5 yr commitment; time estimate does not include optional events)

Economic Security

UCSF Benioff Children's Hospital Oakland Anchor Institution Mission

BCH Oakland embraces its role as an anchor institution by leveraging its resources and influence to promote community well-being and economic stability. This includes creating local jobs, supporting workforce development in underserved areas, and aligning business practices to address the social drivers of health.

The **Community Construction Outreach Program (CCOP)** is a key component of this anchor work. CCOP aims to drive economic opportunity in the East Bay by connecting local residents to training and job opportunities in construction and skilled trades. With an ambitious goal of achieving 30% local hiring for contractors on UCSF projects, CCOP ensures that construction efforts directly benefit the communities BCH Oakland serves. Partnerships with organizations such as the West Oakland Job Resource Center, Cypress Mandela, Rising Sun, and the Construction Trades Workforce Initiative play a critical role in building pathways for local residents to enter and thrive in these industries.

A planned **Youth Mental Health Pipeline** builds on the CHAMPS program's success in preparing youth for healthcare careers by focusing on behavioral health pathways. Recognizing critical workforce shortages and the need for culturally responsive care, a mental/behavioral track will be piloted in the Summer 2025 to will provide mentorship, job shadowing, and training to local youth from underserved communities. By centering youth voices in program design and collaborating with key partners, this initiative aims to cultivate a diverse behavioral health workforce while addressing mental health disparities. This pipeline strengthens BCH Oakland's commitment to health equity by expanding opportunities for future mental health professionals and improving access to care for marginalized populations.





We thank you for your
continued support in
our programs.


UCSF Benioff Children's Hospital
Oakland

747 52nd Street, Oakland, CA 94609

(510) 428-3000

www.ucsfbenioffchildren.org